

# WMFOUT command

2443 GstarCAD MY /KW August 25, 2021 [CAD Commands](#) 0 1333

The **WMFOUT** command is used to save objects as Windows metafiles.

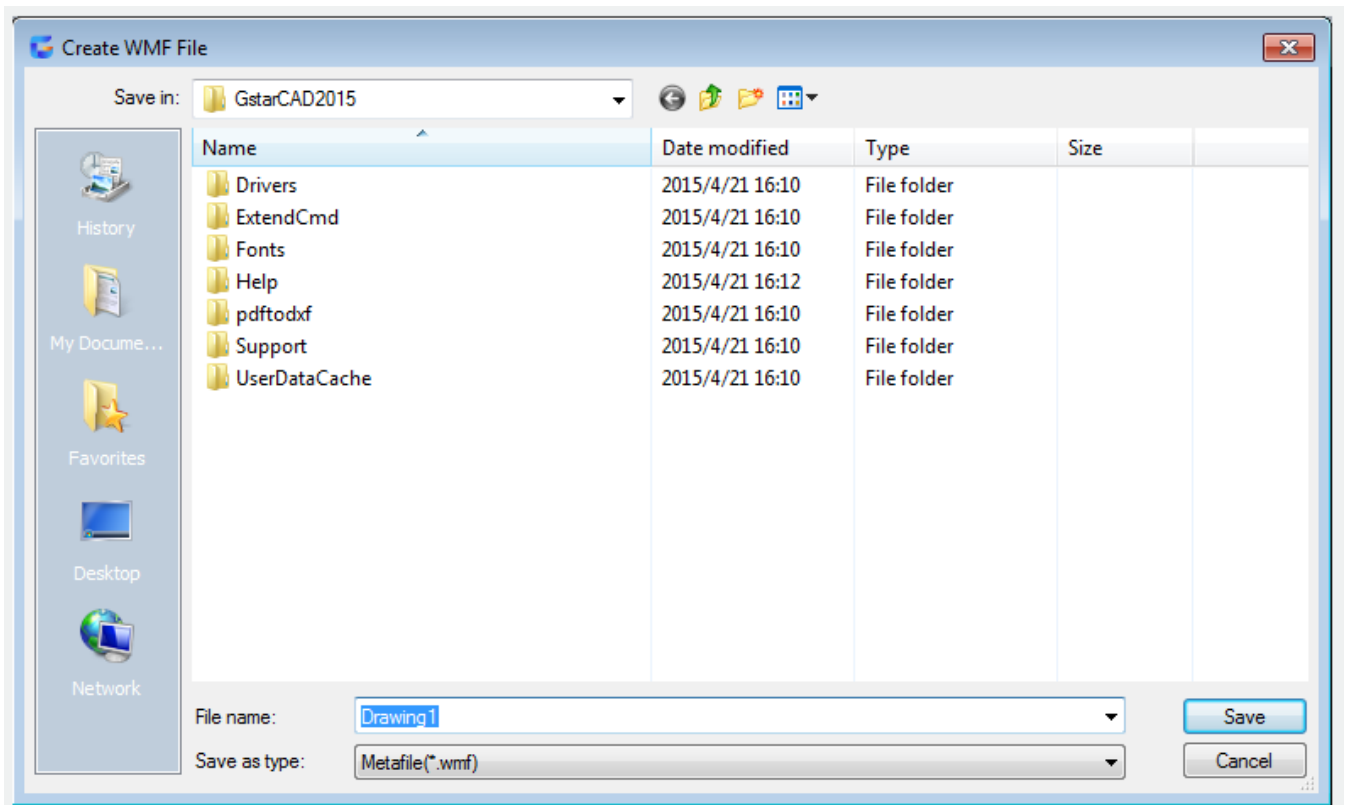
## Command Access:

**Command** : WMFOUT

## Command Prompts:

Select object:

## Function Description:



Online URL: <https://www.kb2.gstarcad.com.my/article.php?id=2443>