

# SUPERHATCH command

2377 GstarCAD MY /KW August 23, 2021 [CAD Commands](#) 0 1491

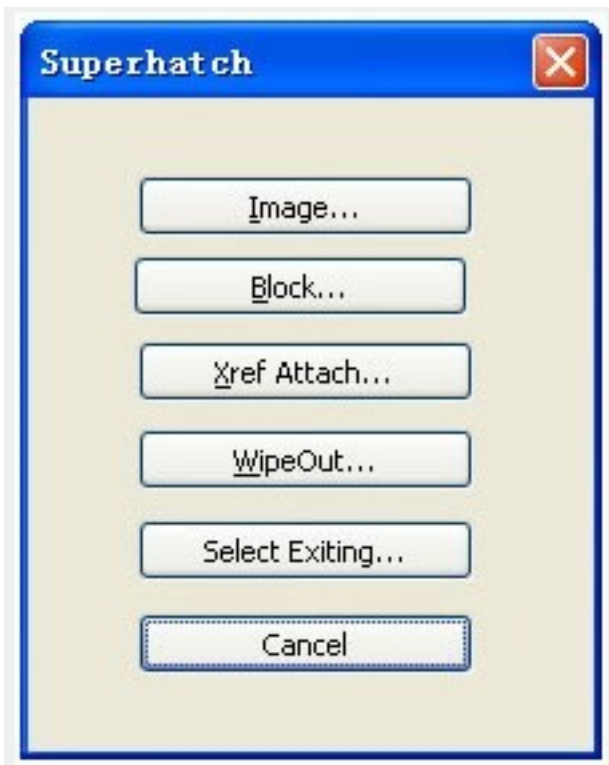
The **SUPERHATCH** command is used to create almost any type of fill like image, block, xref and wipeout, all you need to do is make a block of the pattern that you want to tile as your hatch.

**Command Access :**

**Command :** SUPERHATCH

**Menu :** Express>Draw>Superhatch

The Superhatch dialog box is displayed:



**Image :** Accesses the Select Image dialog box to specify the image for the hatch pattern.

**Block :** Opens the Superhatch\_Insert dialog box to specify the block for the hatch pattern.

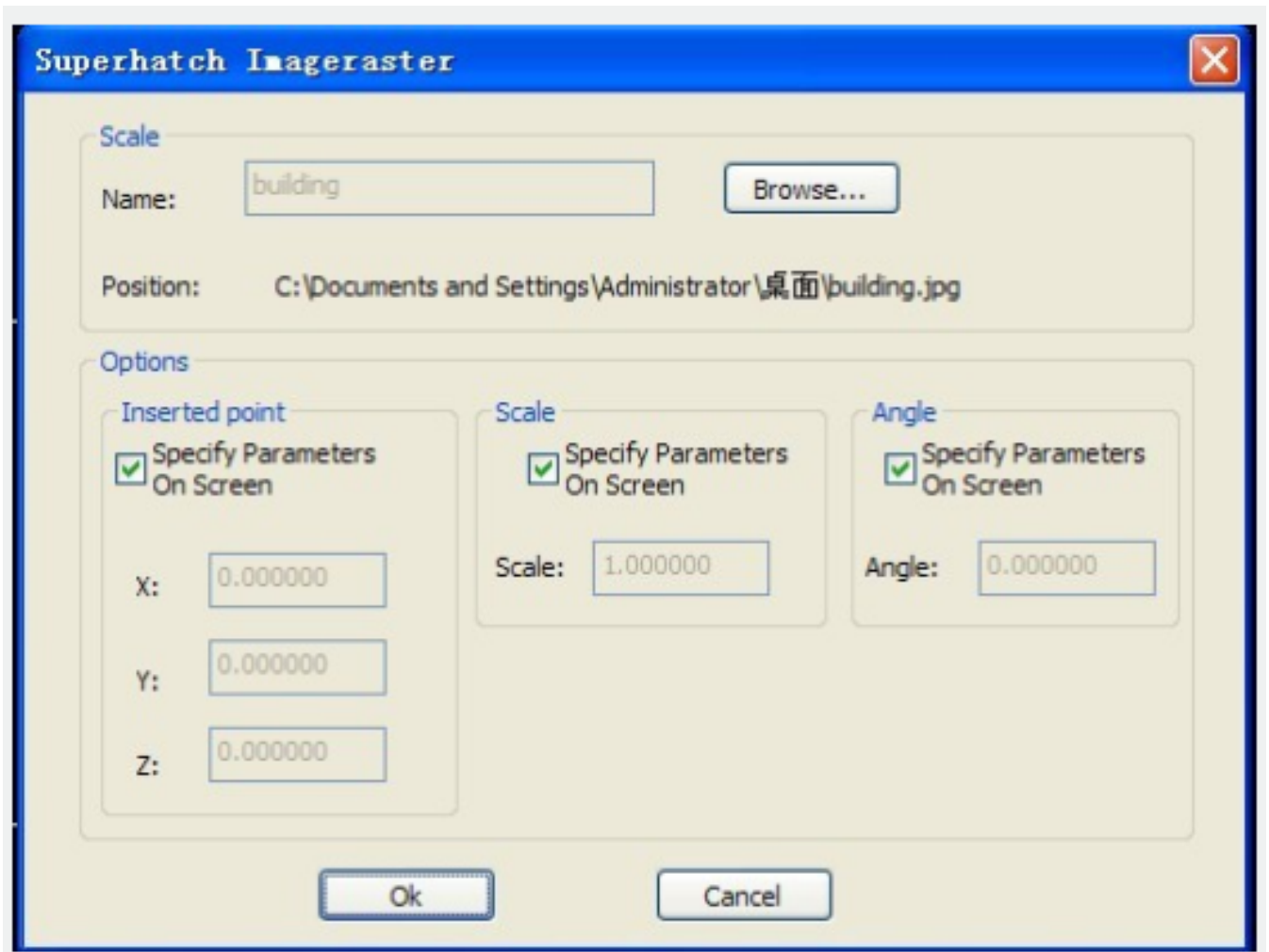
**Xref Attach :** Accesses the Select reference file dialog box for specifying an xref file for a hatch pattern.

**WipeOut :** Selects a wipeout object as a hatch pattern.

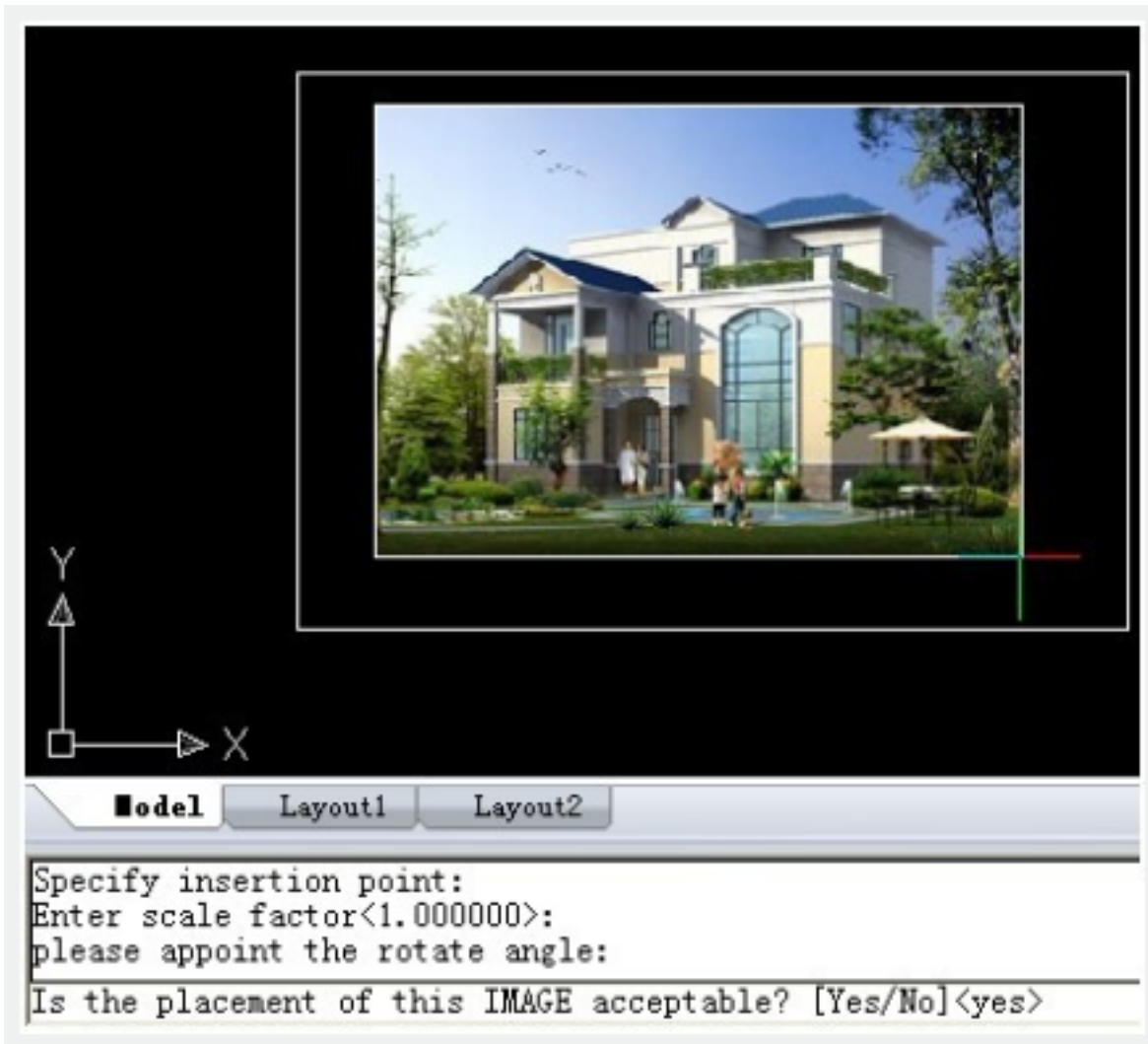
**Select Existing :** Selects an existing image, block, xref, or Wipeout as a hatch pattern.

**For Images:**

1. Open Superhatch dialog box.
2. Click Image... button, choose an image file, the Superhatch Imageraster dialog box is displayed:



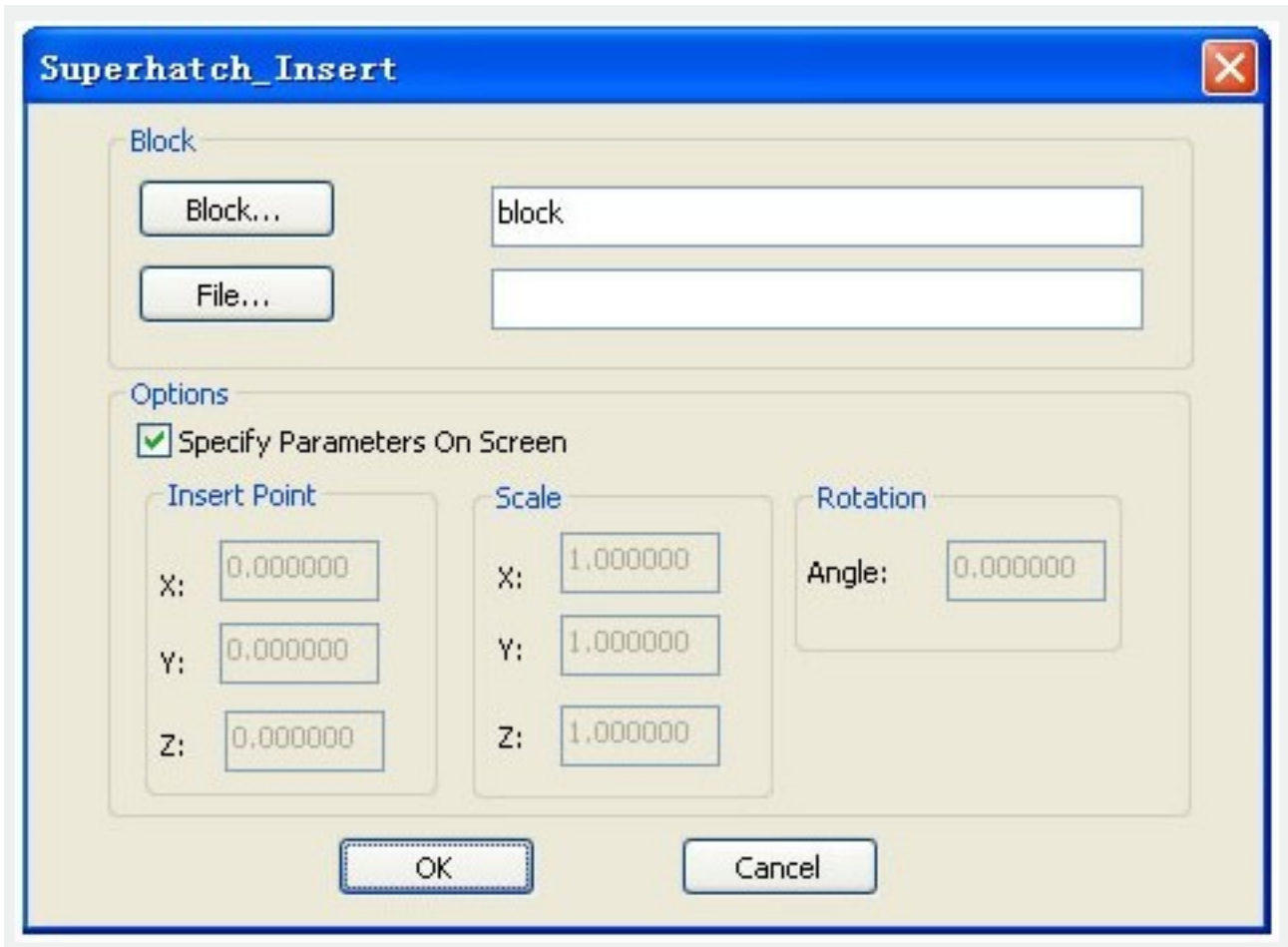
3. Pick the OK button in the Superhatch Imageraster dialog box, specify insertion point, scale factor and angle of rotation.
4. The prompt "Is the placement of this IMAGE acceptable? [Yes/No]<yes>":



5. Pick a point in the rectangle, press ENTER to finish.

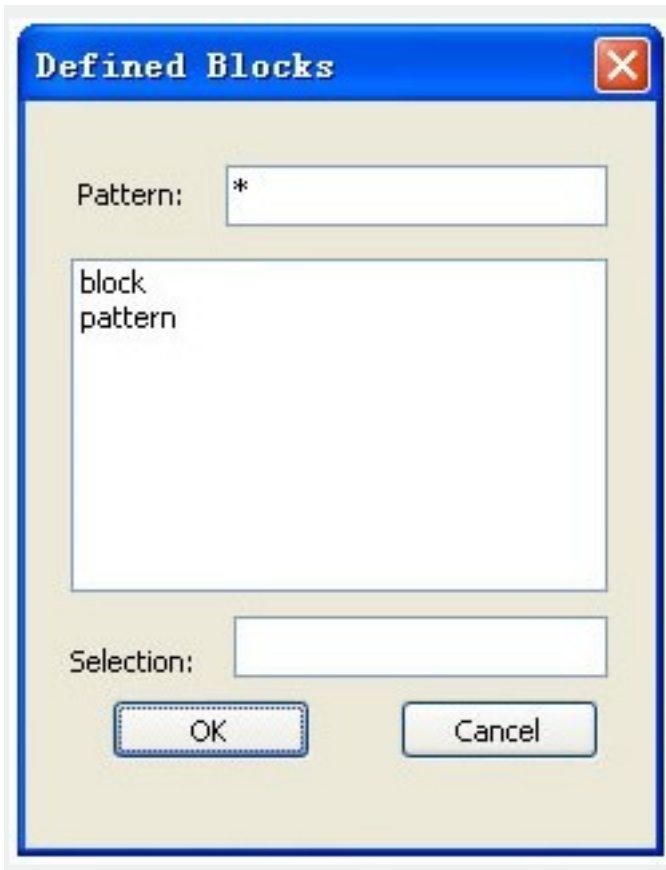
#### For Blocks:

1. Open Superhatch dialog box.
2. Click the Block... button to access the Superhatch\_Insert dialog box:



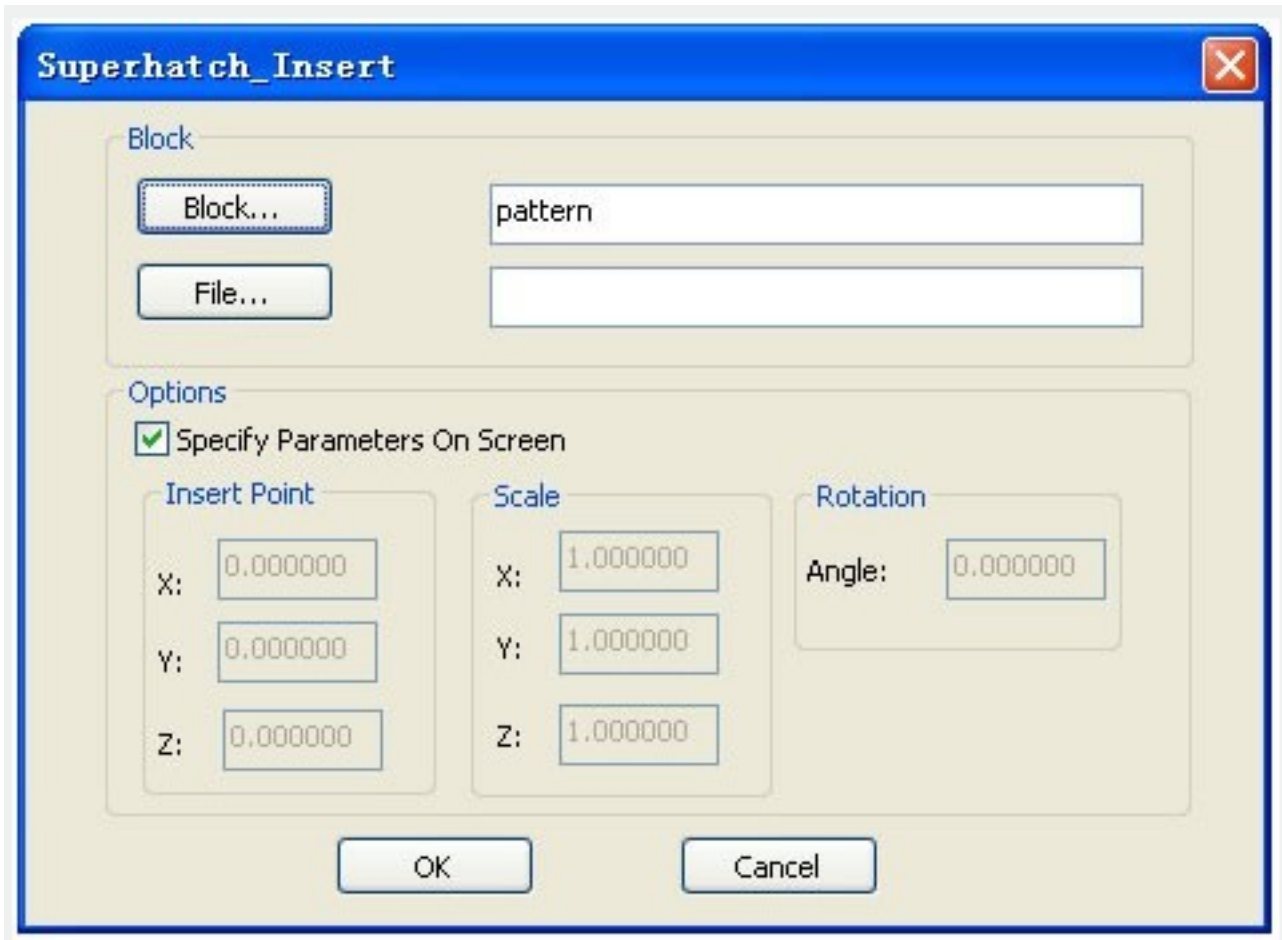
**Block:** Click the Block... button to select a block in the current file:

**File:** Pick the File... button to select a drawing file as the block.



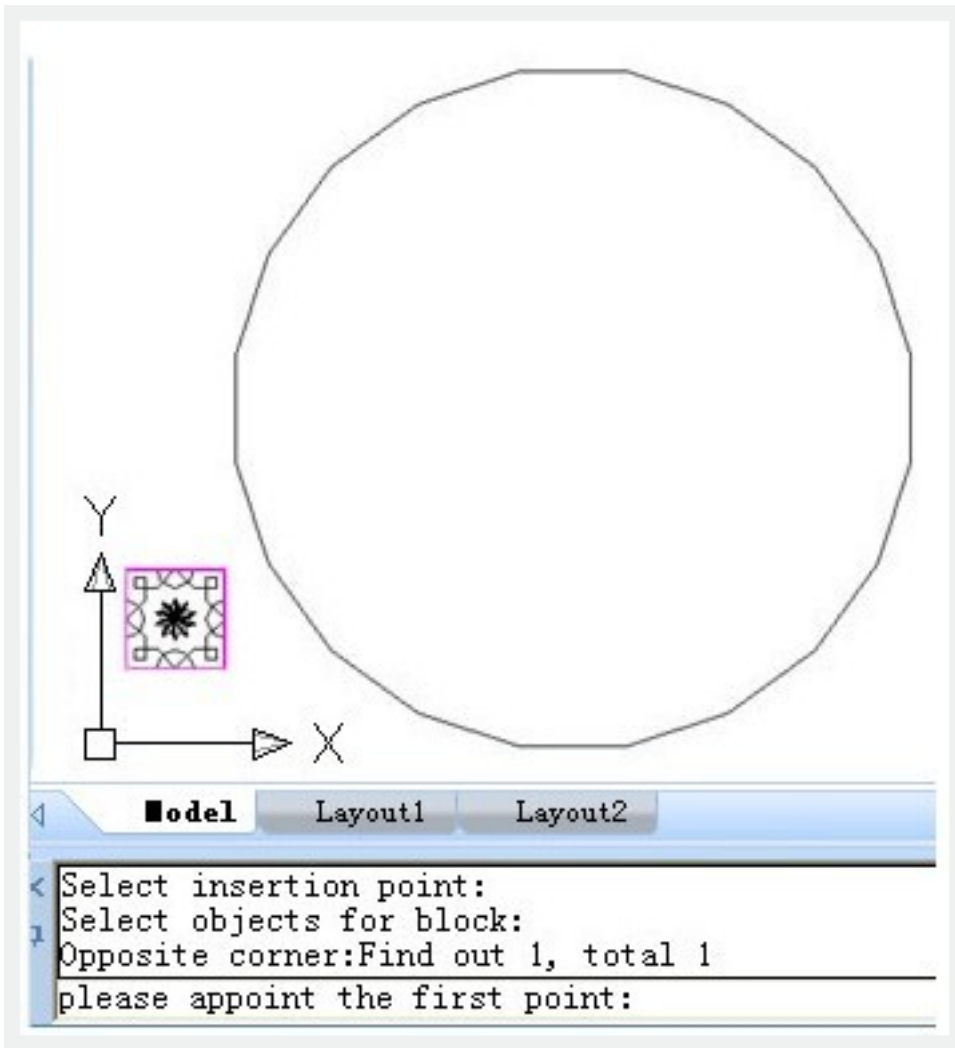
3. Select the block in the Defined Blocks dialog box and press OK.

**Note:** Adjust insertion parameters on screen or deselect the check box to preset insertion parameters:

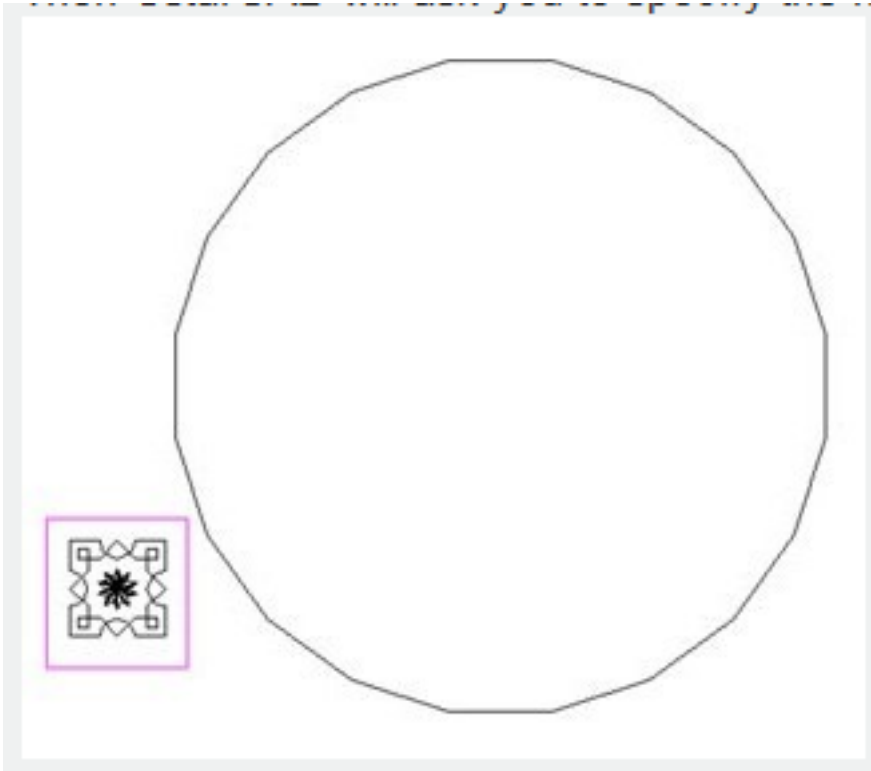


4. Specify insertion point, scale factor and angle of rotation.

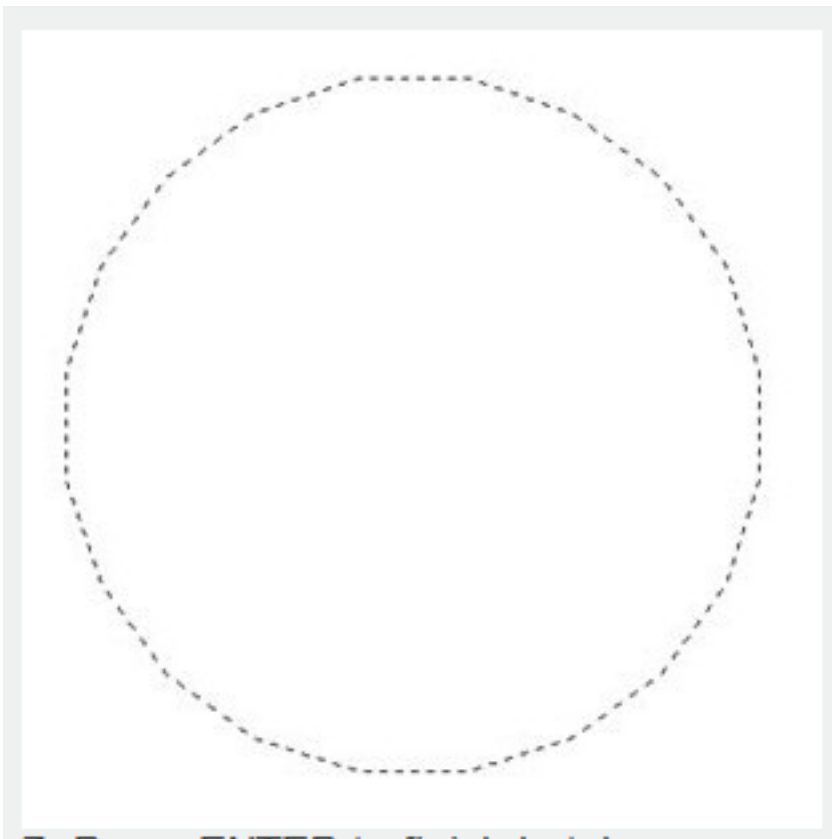
5. The prompt "Is the placement of this IMAGE acceptable? [Yes/No]<yes>" is displayed. Choose No to Esc. If you choose Yes, GstarCAD will ask you to specify the first point:



Then GstarCAD will ask you to specify the next point:

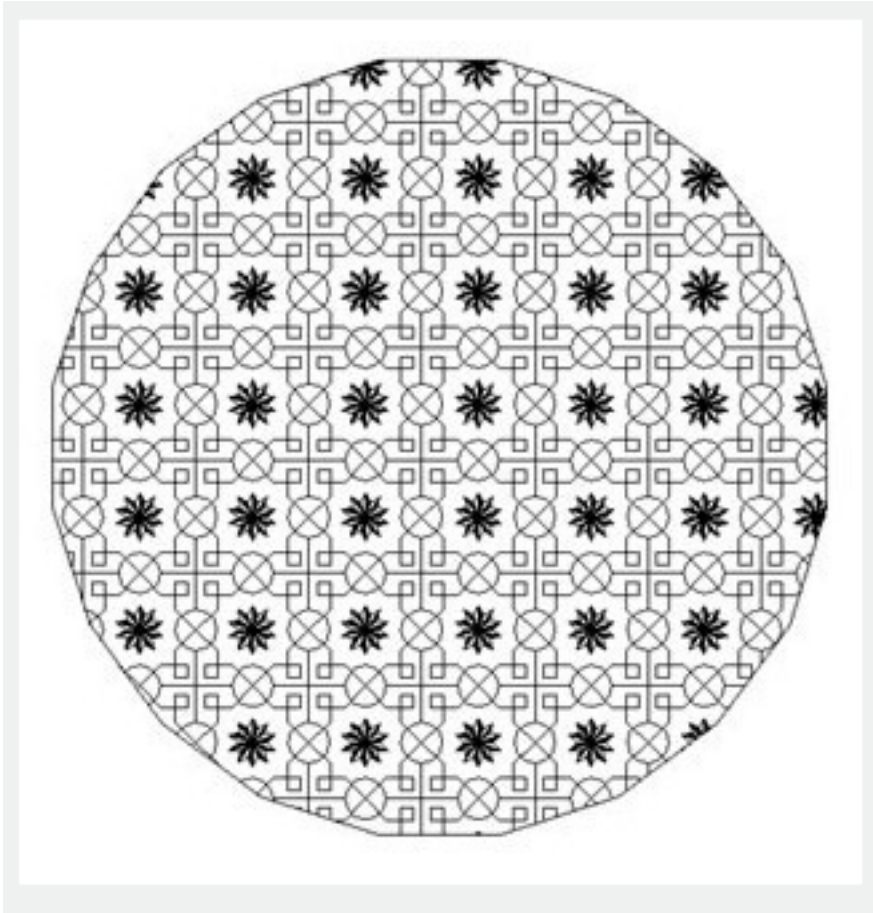


6. Specify an internal point for hatch boundary:



7. Press ENTER to finish hatch:





Online URL: <https://www.kb2.gstarcad.com.my/article.php?id=2377>