

# PLOTSAMP command

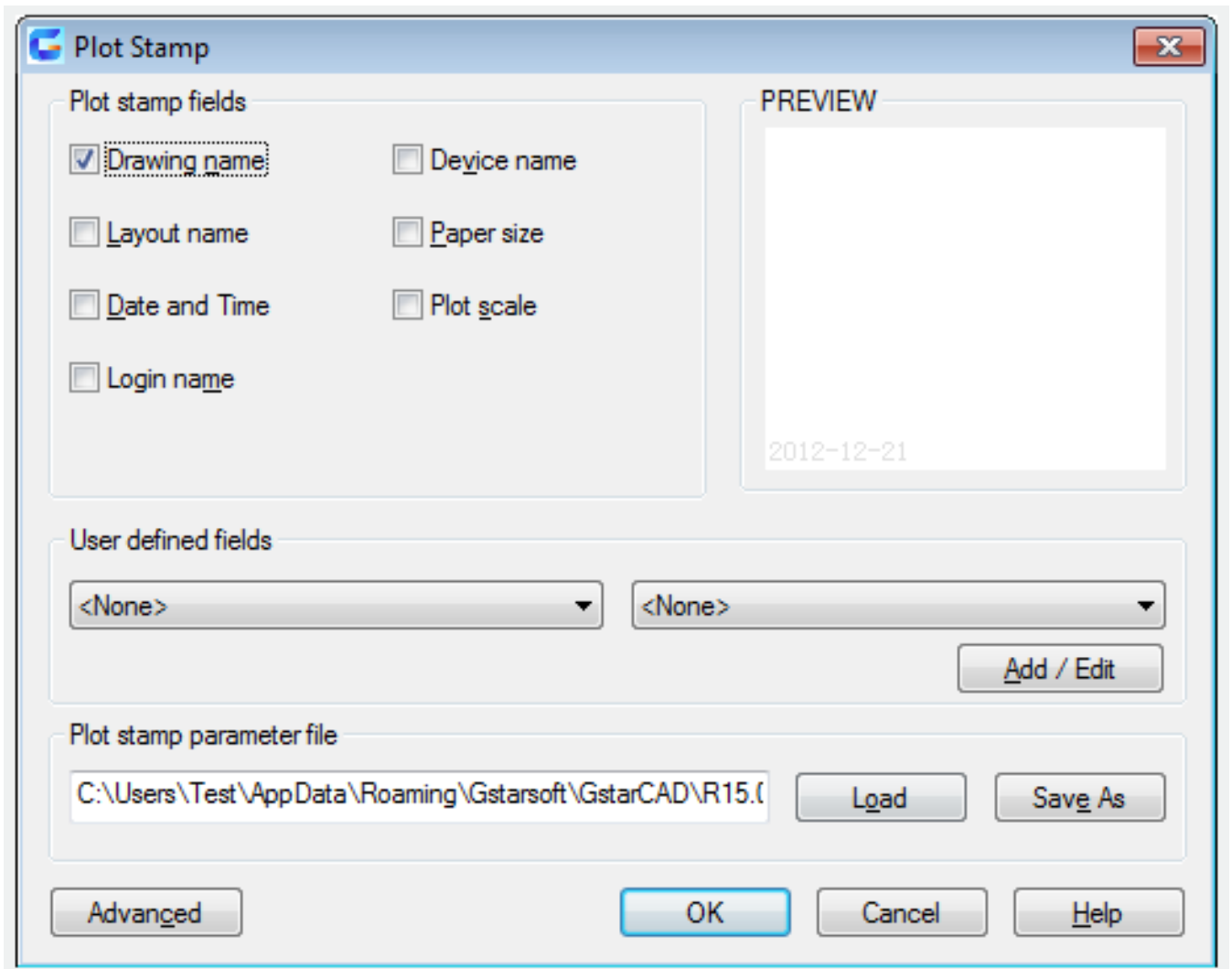
2283 GstarCAD MY /KW August 20, 2021 [CAD Commands](#) 0 1044

The **PLOTSAMP** command is used to place a stamp at a specified position and record it in the file.

**Command Access:**

**Command :** PLOTSTAMP

**Function Description:**



Inputting "\_plotstamp" under command prompt, it will display options.

Online URL: <https://www.kb2.gstarcad.com.my/article.php?id=2283>