

MLEADERSTYLE command

2235 GstarCAD MY /KW April 15, 2022 [CAD Commands](#) 0 1640

The **MLEADERSTYLE** command is used to create or modify a multileader style.

Command Access:

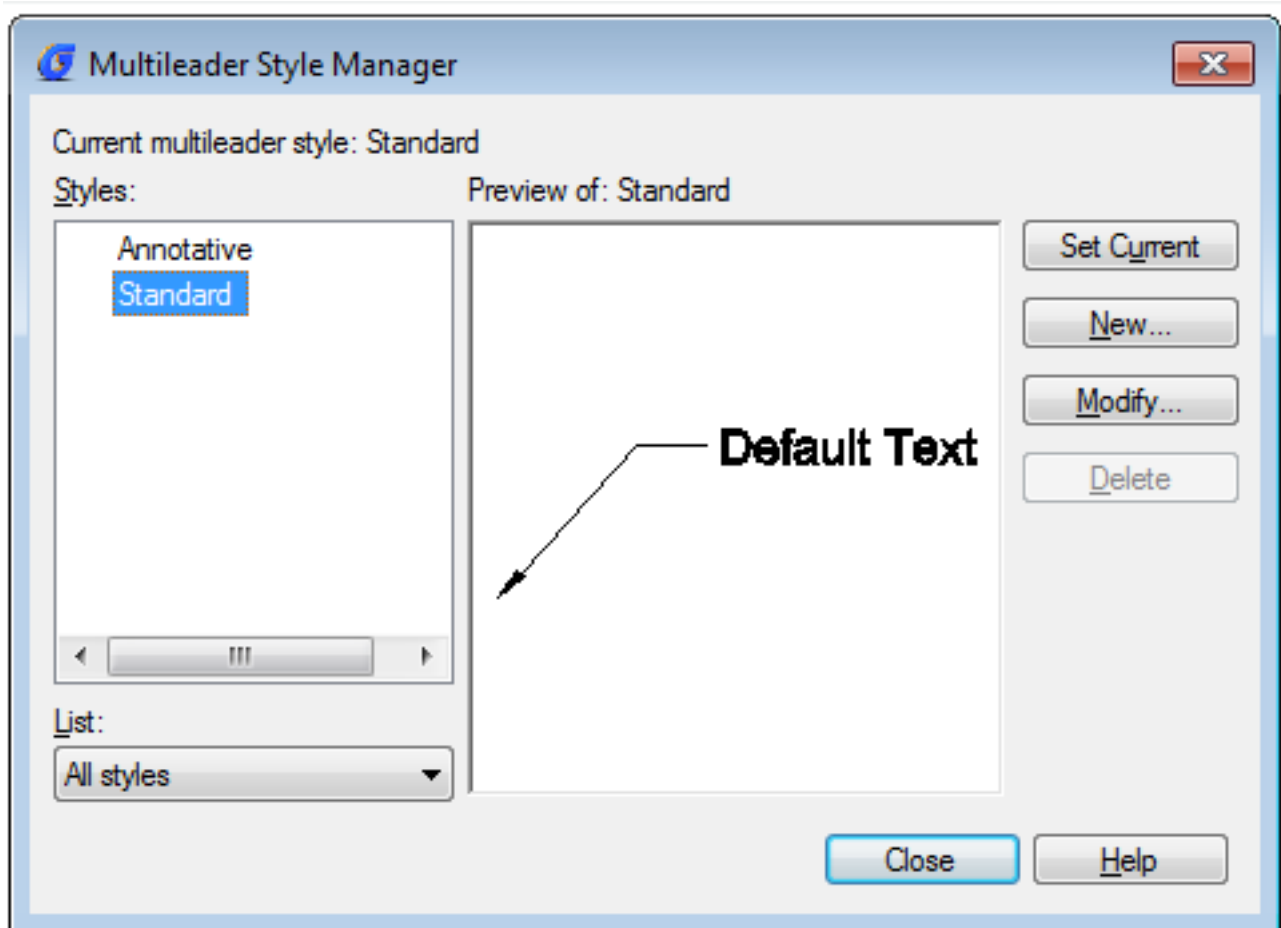
Ribbon : Annotation > Leader

Menu : Format > Multileader Style Manager

Command : MLEADERSTYLE

Function Description:

It will display the "Multileader Style Manager" dialog box. Users could create a new multileader style or modify existing styles.



Related tutorial video:

- [Mleaderstyle command](#) 00:28
- [Mleader command](#) 02:03
- [Use grips to edit objects](#) 04:07
- [Mleaderedit](#) 04:46
- [Mleaderalign](#) 05:37

Above video sources from [TUTORIAL - GETTING STARTED WITH GSTARCAD](#), enrol now for free.

Online URL: <https://www.kb2.gstarcad.com.my/article.php?id=2235>