

# LAYTRANS command

2191 GstarCAD MY /KW August 17, 2021 [CAD Commands](#) 0 1329

The **LAYTRANS** command is used to change the current layer to specified layer standard.

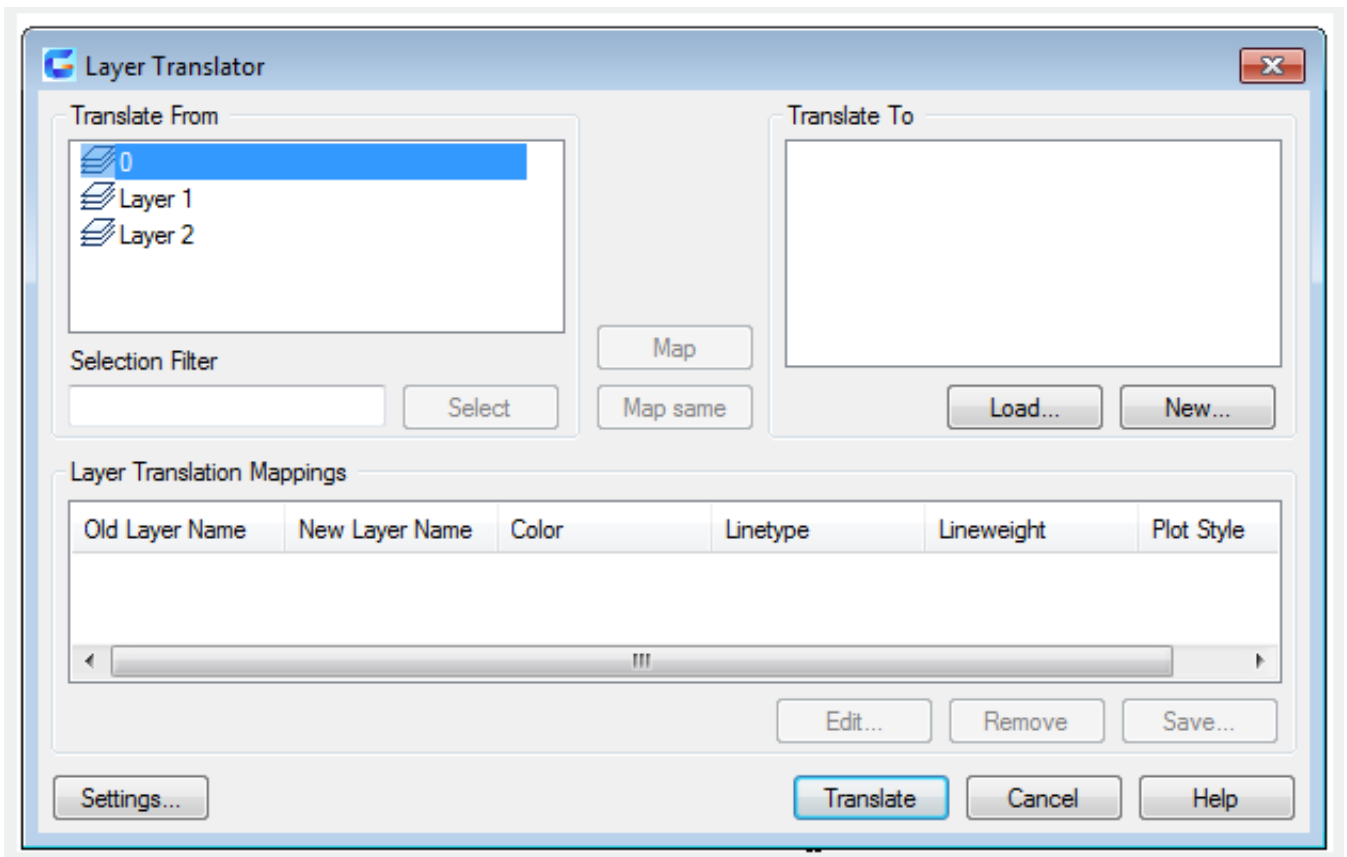
## Command Access:

**Ribbon** : Manage > CAD Standards > Layer Translator

**Menu** : Format > Layer Tools > Layer Translator...

**Command** : LAYTRANS

## Function Description:



Users could map the current layers in drawing to other layer names and layer properties of a specified drawing or standard files, and then translate them.

Online URL: <https://www.kb2.gstarcad.com.my/article.php?id=2191>