

LAYOUTWIZARD command

2188 GstarCAD MY /KW August 17, 2021 [CAD Commands](#) 0 907

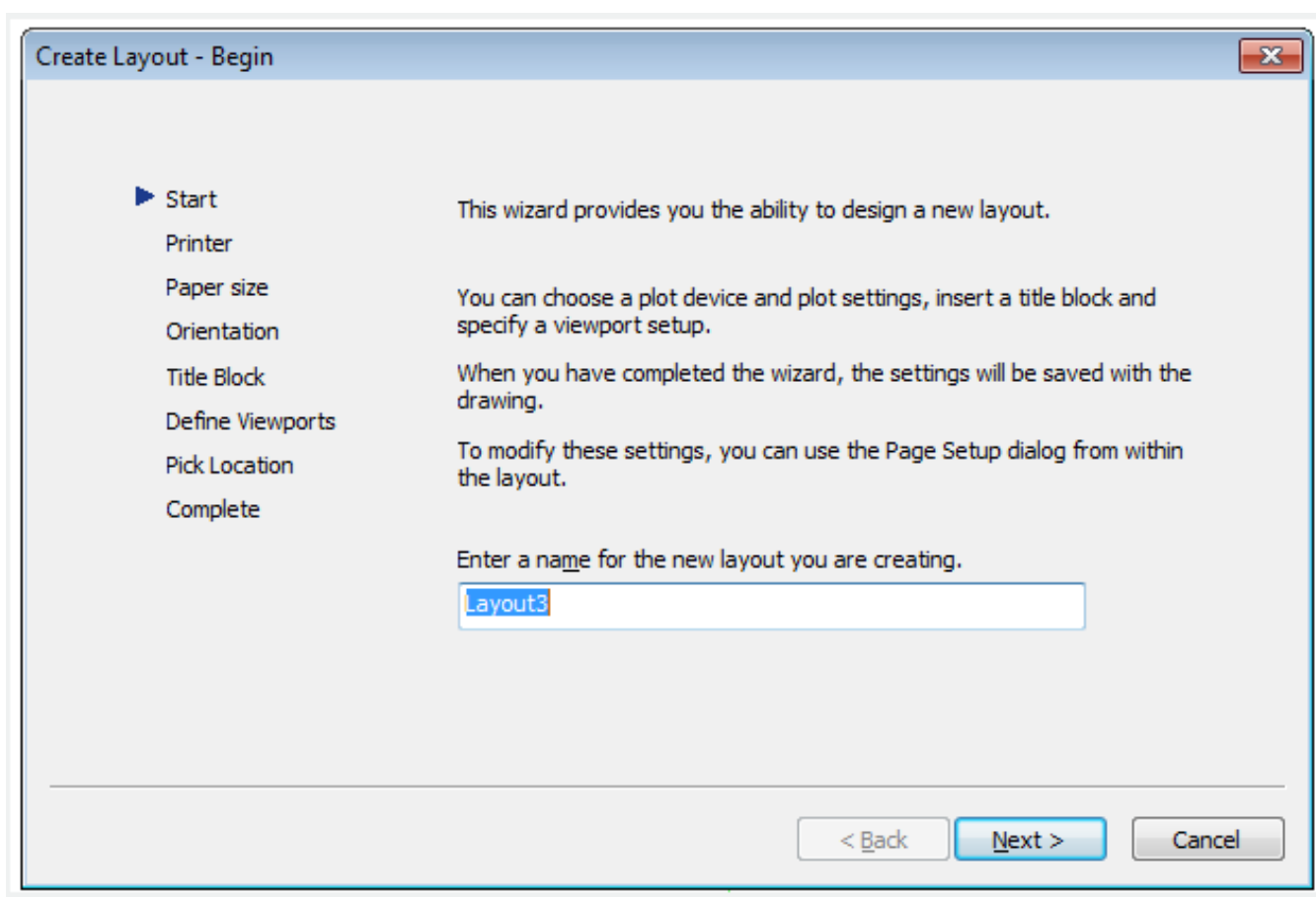
The **LAYOUTWIZARD** command is used to create new layout and specify page and print settings.

Command Access:

Menu : Insert > Layout > Create Layout Wizard

Command: LAYOUTWIZARD

Function Description:



Online URL: <https://www.kb2.gstarcad.com.my/article.php?id=2188>