

# HYPERLINK command

2151 GstarCAD MY /KW August 16, 2021 [CAD Commands](#) 0 1084

The **HYPERLINK** command is used to insert a hyperlink to an object or modify an existing hyperlink.

## Command Access:

**Ribbon** : Insert > Data > Hyperlink

**Menu** : Insert > Hyperlink

**Command** : HYPERLINK

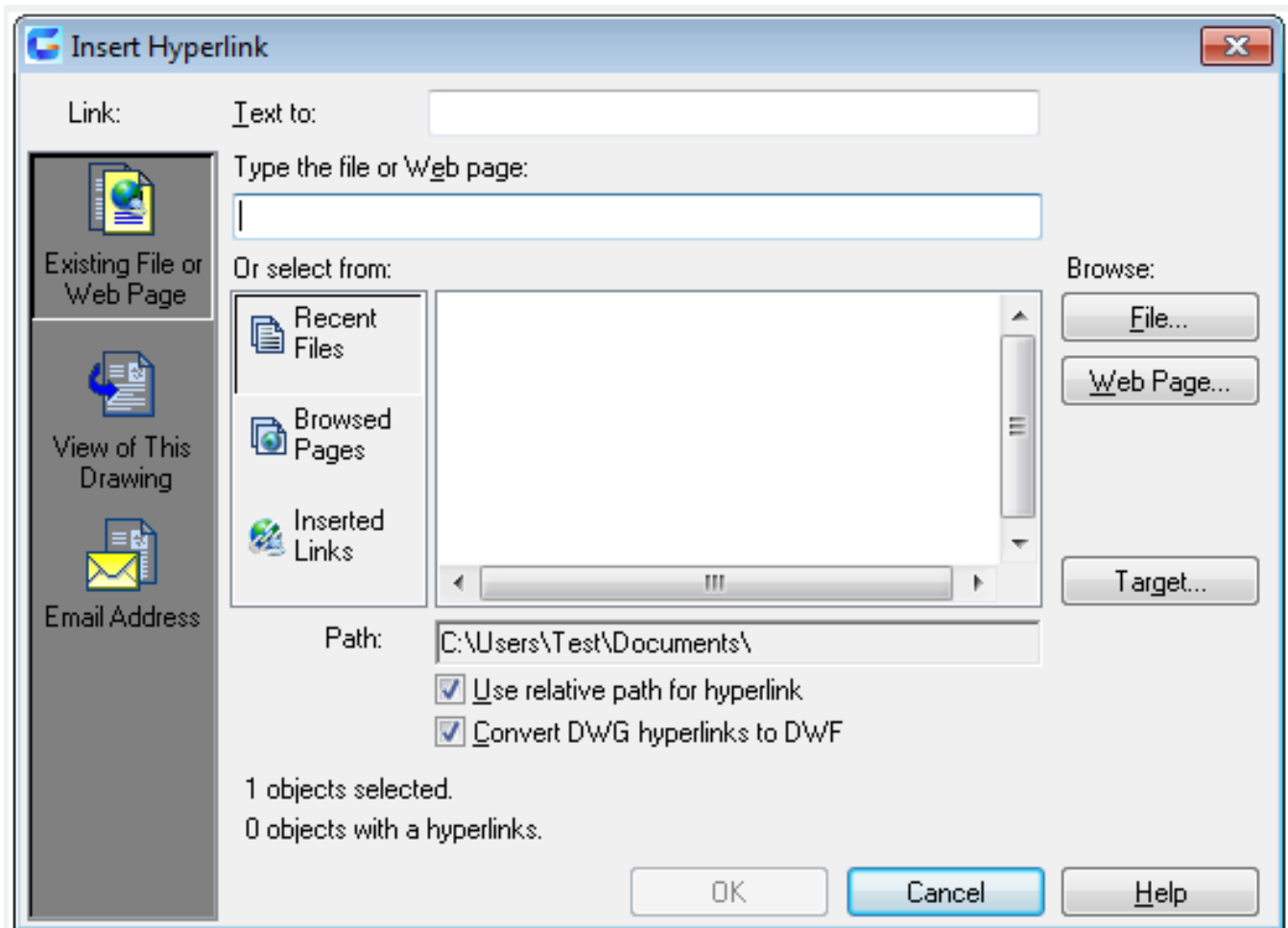
**Shortcut** : select object including hyperlink and right-click, select "Hyperlink" and click "Edit Hyperlink" option

## Command Prompts:

Select object:

## Function Description:

Users could skip to associate files by hyperlinks.



After inserting a hyperlink, the hyperlink icon will display as cross cursor moving to associated object. Users could select the object with hyperlink and right-click to select "Hyperlink" option. The PICKFIRST system variable must be specified to 1 before opening the associated file. Inputting "-hyperlink" under command prompt, it will display options:  
Enter an option [Remove/Insert]

Online URL: <https://www.kb2.gstarcad.com.my/article.php?id=2151>