

# EXPORTLAYOUT command

2119 GstarCAD MY /KW August 13, 2021 [CAD Commands](#) 0 1575

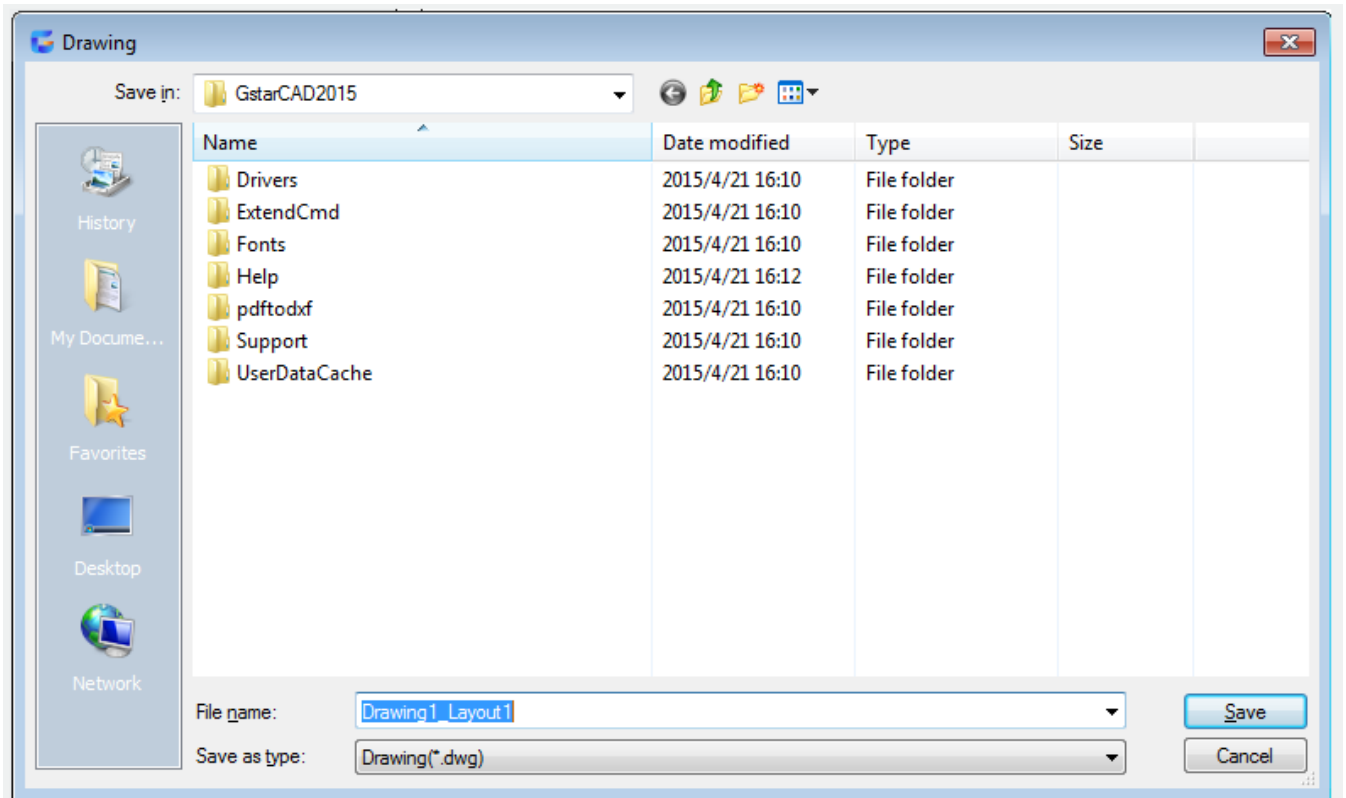
The **EXPORTLAYOUT** command is used to save all visible objects in current layout to model space of new drawing.

## Command Access:

**Command :** EXPORTLAYOUT

## Function Description:

The exported objects are reappearing in new model space. Users could clip, zoom, copy, or explode them.



Users could specify a new file name and location. All exported layouts are saved in drawings (\*.dwg).

**Note:** the EXPORTLAYOUT command could only be used in layout. When editing block, reference, or maximizing the viewport, this command is disabled in model space.

Online URL: <https://www.kb2.gstarcad.com.my/article.php?id=2119>