

# BATCHPRINT command

2011 GstarCAD MY /KW August 5, 2021 [CAD Commands](#) 0 1100

The **BATCHPRINT** command batch print drawings with the same drawing frame attribute.

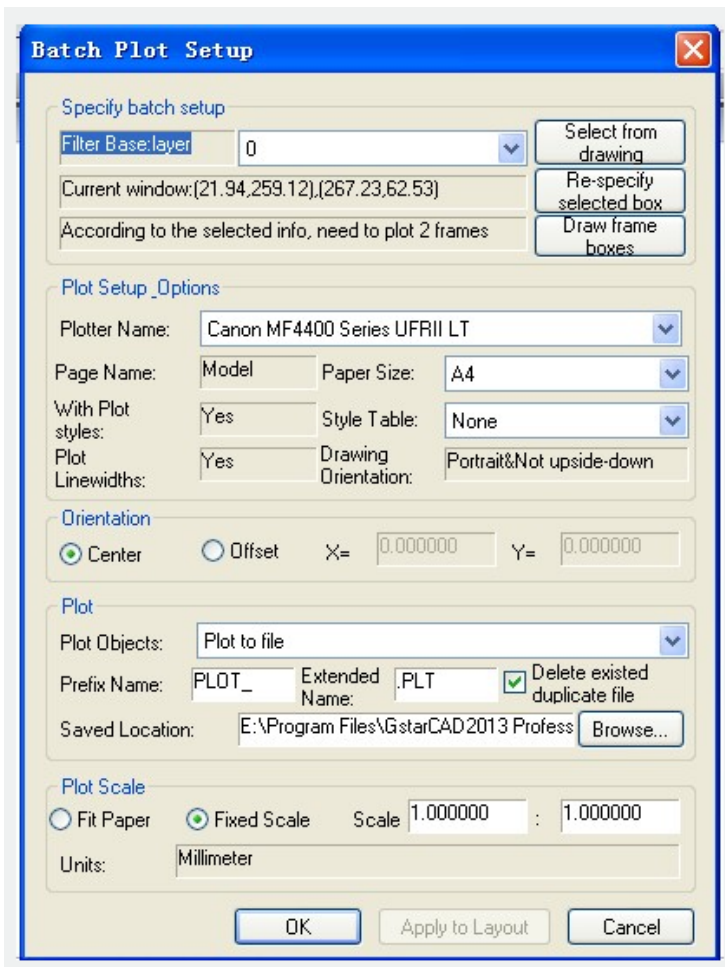
## Command Access :

**Menu** : Express tools>Plot Tool>Batch Print

## Command Entry : BP

## Operation steps:

- 1.Start the command.
- 2.Specify the type of frame, you can select Layer/ Block/ Polyline so that the system can recognize the frame.
- 3.Corner select the frame you want to print, you will get a dialog box as below.



4. Set the print Parameters, click "OK" to execute bath print.

Online URL: <https://www.kb2.gstarcad.com.my/article.php?id=2011>