

# BHATCH command

2000 GstarCAD MY /KW August 4, 2021 [CAD Commands](#) 0 1179

The **BHATCH** command is used to fill the closed region or selected object by fill pattern or gradient fill.

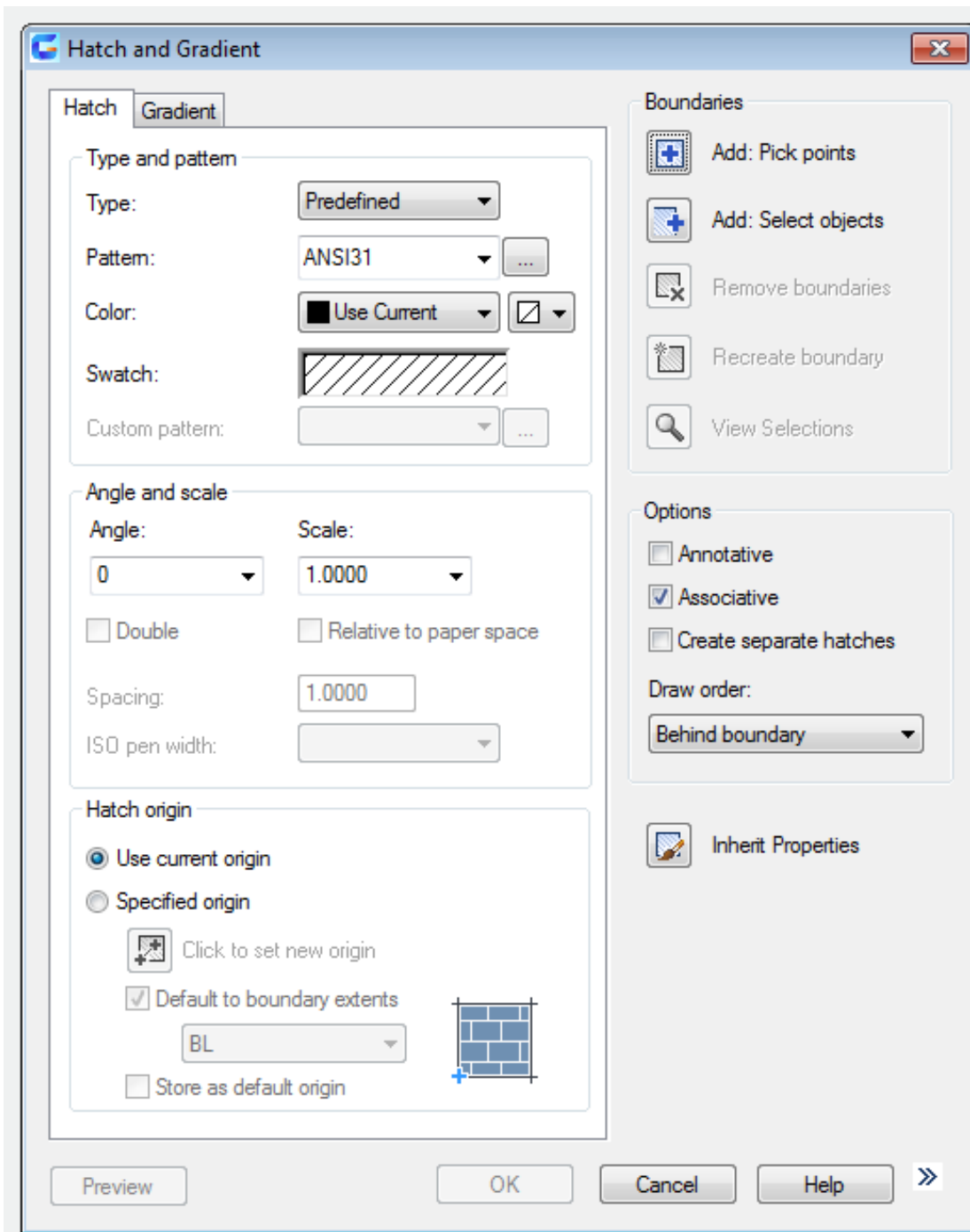
## Command Access:

**Ribbon** : Home > Draw > Hatch...

**Menu** : Draw > Hatch

**Command** : BHATCH (display The Boundary Pattern Fill dialog box), -BHATCH (display command line prompts)

## Function Description:



Inputting "-hatch" under the command prompt, it will display options.

Online URL: <https://www.kb2.gstarcad.com.my/article.php?id=2000>