

# BESETTINGS command

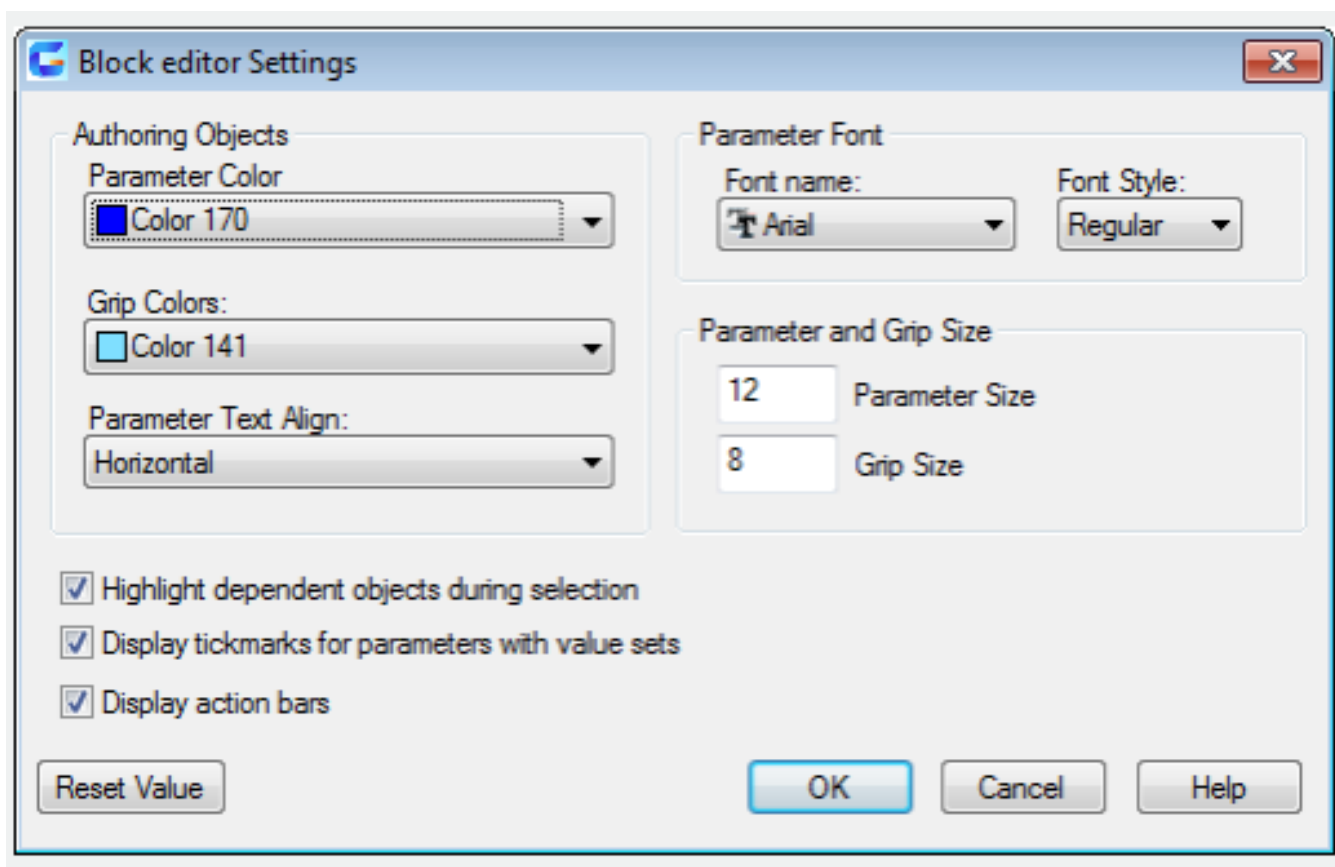
1998 GstarCAD MY /KW August 4, 2021 [CAD Commands](#) 0 1004

The **BESETTINGS** command is used to display the "Block editor Settings" dialog box.

**Command Access:**

**Command :** BESETTINGS

**Function Description:**



Online URL: <https://www.kb2.gstarcad.com.my/article.php?id=1998>