

# AUTOLAYER command

1983 GstarCAD MY /KW August 3, 2021 [CAD Commands](#) 0 1252

The **AUTOLAYER** command allows you to customize and predefine the associated layer of a command to streamline drafting workflow.

## **Command Access:**

**Command Name :** AUTOLAYER

## **Function Description :**

You can create as many layers as you want.

Each layer created must be a predefined command, which you can name its layer, select layer color, linetype and lineweight.

After you execute the predefined command, its layer will be generated automatically.





You can save, load and clear all layer settings from the AUTOLAYER dialog box.

You can enable or disable the AUTOLAYER option from the status bar.

Autolayer



Enable Autolayer

Command	Layer	Color	Linetype	Lineweight
line	LINE	 150	CENTER	— Default
*hatch*	HATCH	 212	Continuous	— Default
dimlinear	DIML	 30	Continuous	— Default
mleader	MLEAD	 150	Continuous	— Default

Save Settings

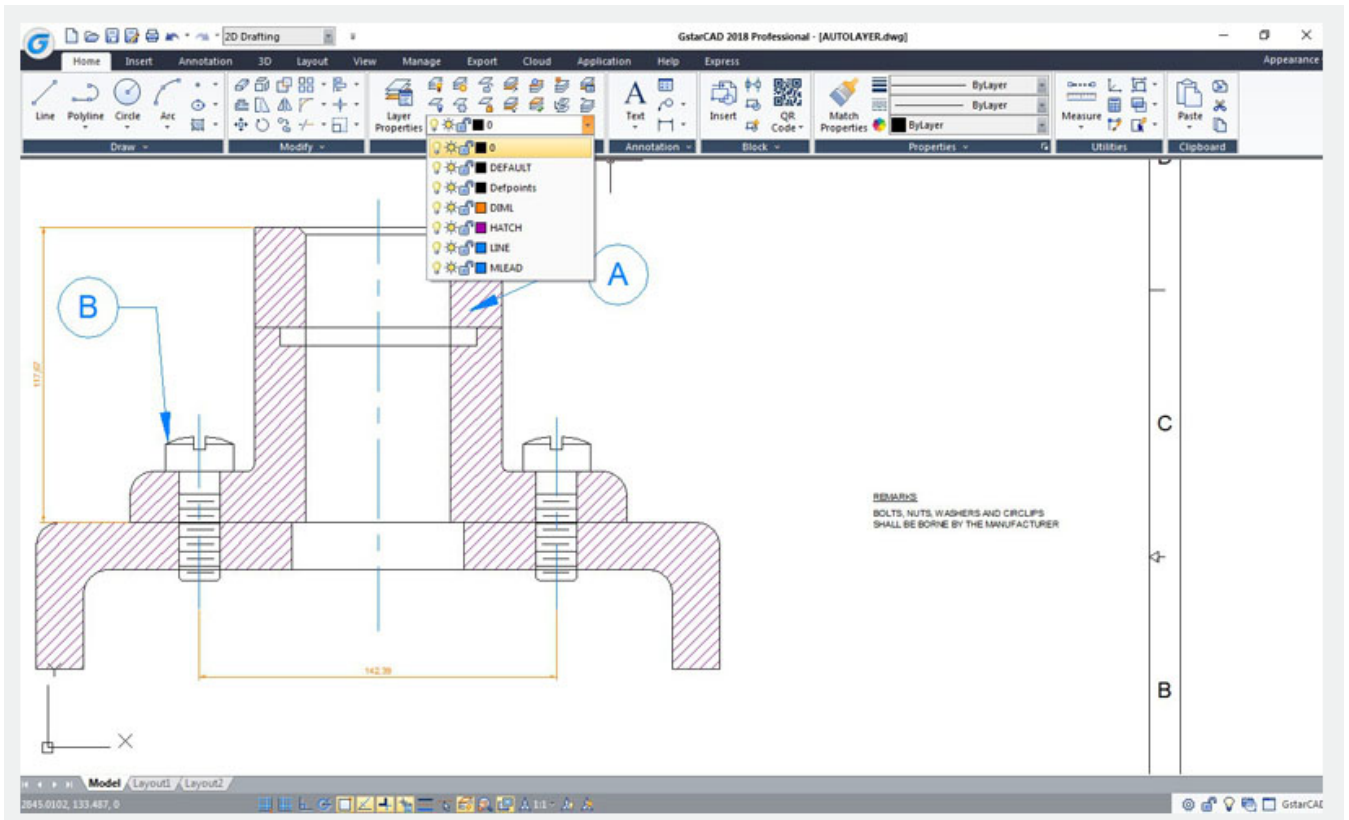
Load Settings

Clear Settings

OK

Cancel

Help



Online URL: <https://www.kb2.gstarcad.com.my/article.php?id=1983>