

# STARTUP system variable.

1843 GstarCAD MY /KW August 26, 2021 [Setting / Configuration, System Variables](#) 0  
1387

## Function Description:

The **STARTUP** system variable is used to control the display content when starting applications or opening new drawings.

**Type** : Integer

**Saved in** : Registry

**Initial value** : 3

**Range** : 0,1,2,3

This system variable control whether to display Create New Drawing dialog box when using **NEW** or **QNEW** command to create new drawings. It also controls whether to display Startup dialog box when starting applications.

Specifying **FILEDIA** system variable to be 0, file dialog boxes are not displayed.

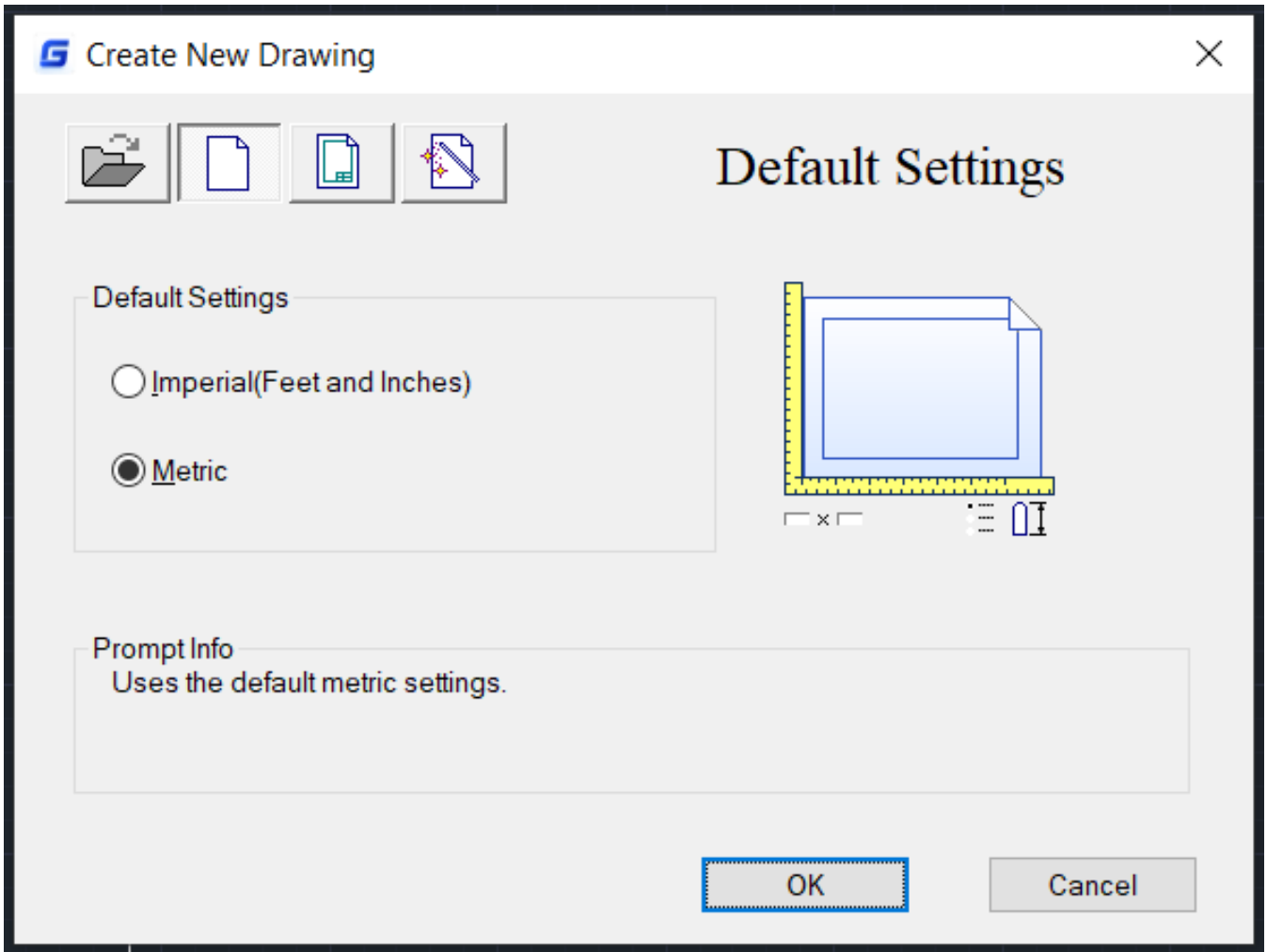
## System Variable Value:

**0** : start a drawing without defining settings

**1** : display Startup or Create New Drawing dialog box

**2** : display a new tab. If this tab is available in applications, display custom dialog box.

**3** : display a new tab and pre-load ribbon when opening or creating a drawing.



Online URL: <https://www.kb2.gstarcad.com.my/article.php?id=1843>