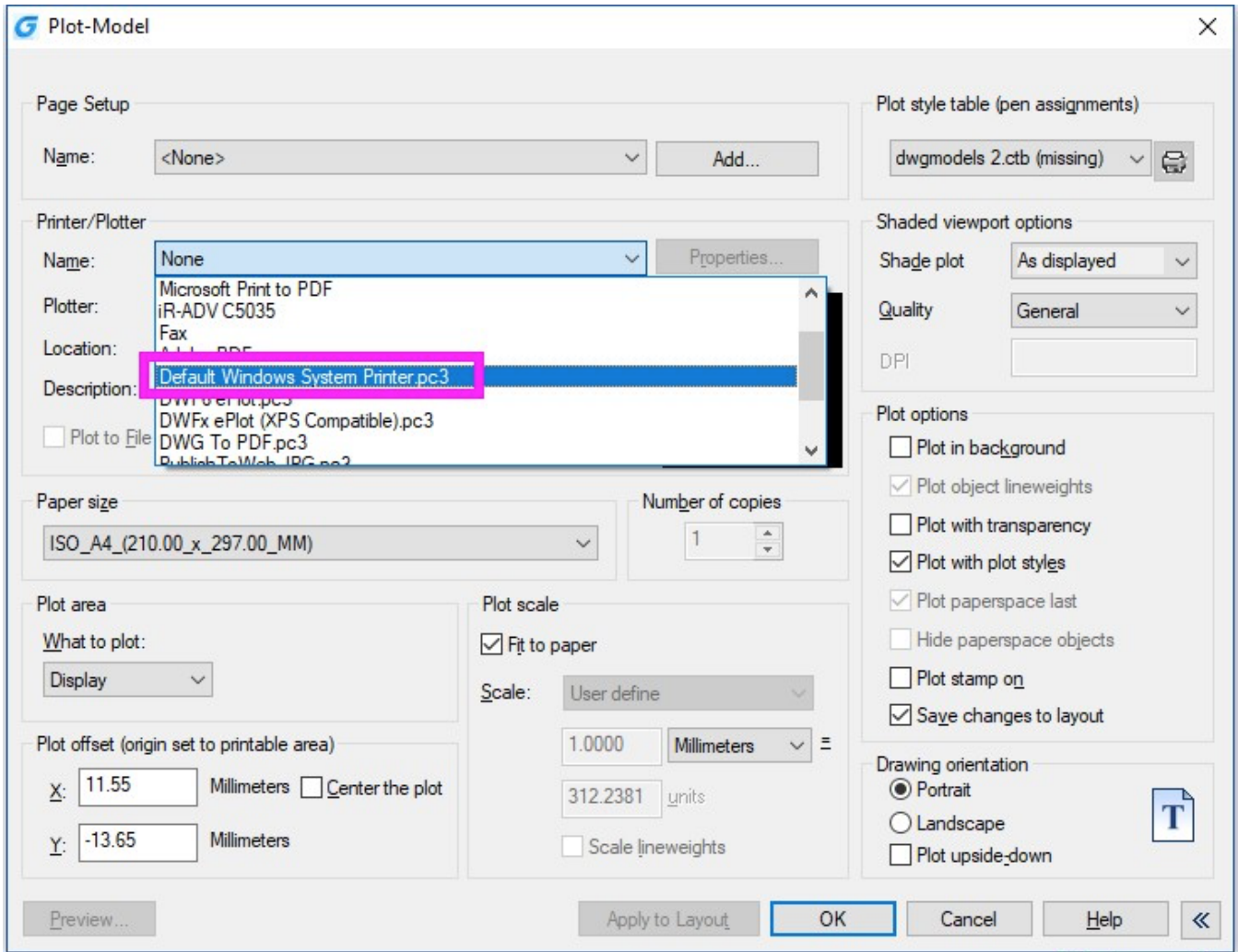


Windows System Printer

1260 kbadmin June 30, 2021 [Workflow](#) 0 3474

Now “Default Windows System Printer” is supported into plot dialog box, so the drawings opened or copied to any machine will automatically use the current machine's default system plot driver.



Online URL: <https://www.kb2.gstarcad.com.my/article.php?id=1260>