

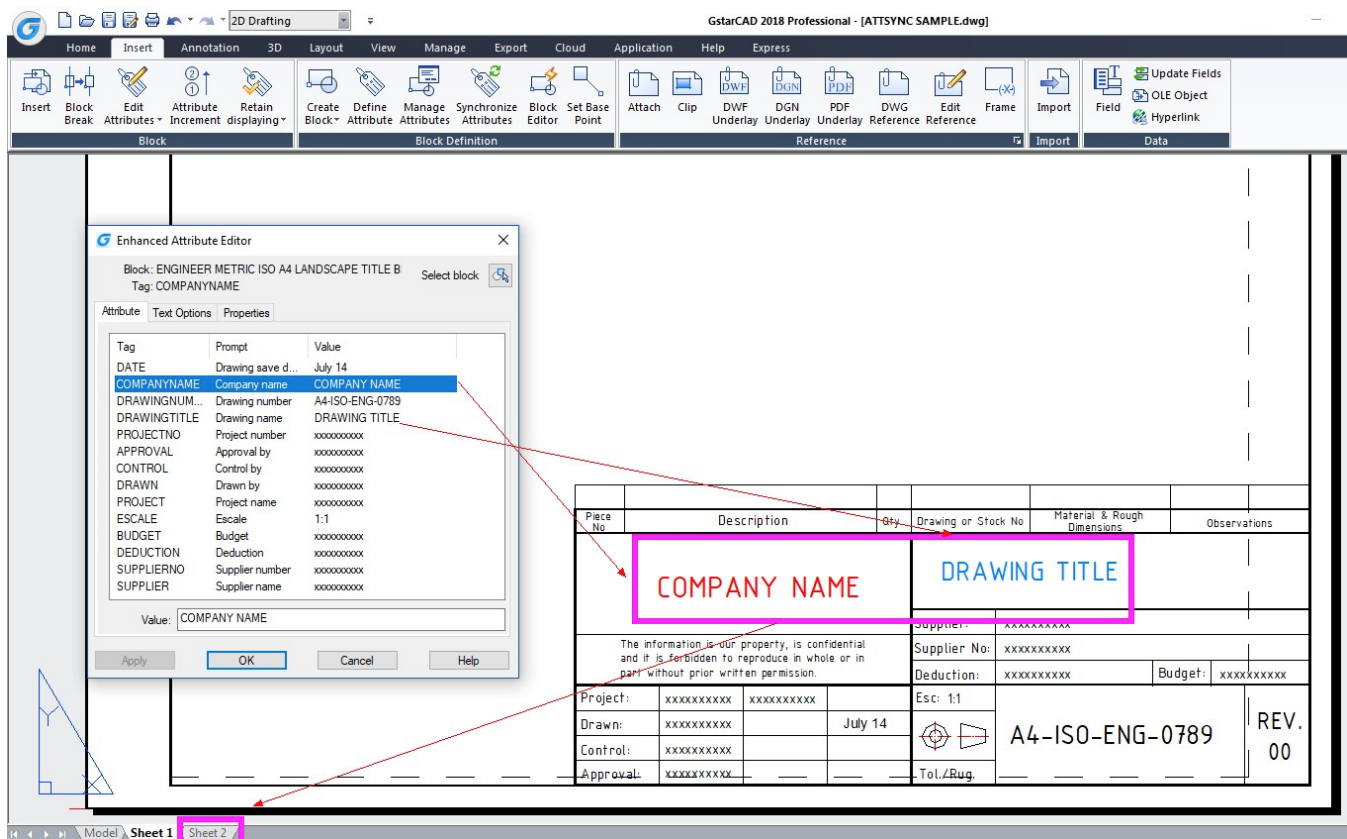
# ATTSYNC Command

1249 kbadmin June 30, 2021 [Workflow](#) 0 4239

## Command name: ATTSYNC

The ATTSYNC command applies attribute changes in block definitions to all block references of the same name. You can use this command to update instances of blocks containing attributes that were redefined using the BLOCK or BEDIT commands.

ATTSYNC does not change any values assigned to attributes in existing blocks. ATTSYNC removes all changes of format or features that are made by ATTEDIT or EATTEDIT commands. And it also deletes all extended data associated with blocks and might affect dynamic blocks and blocks created by third-party applications.




GstarCAD 2018 Professional - [ATTSYNC SAMPLE.dwg]

2D Drafting

Home Insert Annotation 3D Layout View Manage Export Cloud Application Help Express

Block Definition Reference Import Data

Insert Block Break Edit Attributes Attribute Increment Retain displaying Create Block Define Attribute Manage Attributes Synchronize Attributes Block Editor Set Base Point Attach Clip DWF Underlay DGN Underlay PDF Underlay DWG Reference Edit Reference Frame Import Field Update Fields OLE Object Hyperlink

Piece No	Description	Qty.	Drawing or Stock No	Material & Rough Dimensions	Observations
DRAWING TITLE			COMPANY NAME		
The information is our property, is confidential and it is forbidden to reproduce in whole or in part without prior written permission.				Supplier:	xxxxxxxxxx
				Supplier No:	xxxxxxxxxx
				Deduction:	xxxxxxxxxx
				Budget:	xxxxxxxxxx
Project:	xxxxxxxxxx	xxxxxxxxxx	Esc: 1:1	A4-ISO-ENG-0789	REV. 00
Drawn:	xxxxxxxxxx	July 14			
Control:	xxxxxxxxxx				
Approval:	xxxxxxxxxx		Tol./Bug.		

Model Sheet 1 Sheet 2

Online URL: <https://www.kb2.gstarcad.com.my/article.php?id=1249>