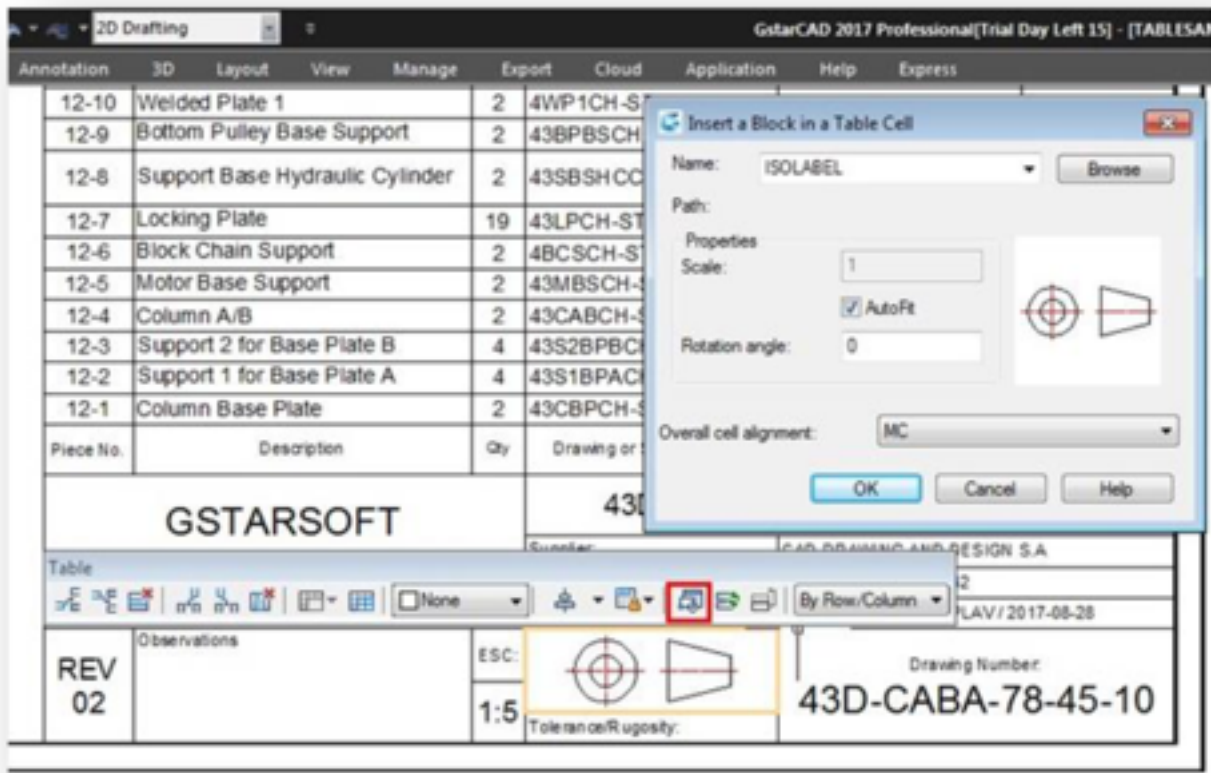


How to Insert a Block Reference in a Cell of a Table?

1177 kbadmin October 13, 2016 [Tips & Tricks](#) 0 4561

Select and Right-Click a cell. On Table window select the icon Insert Block. Then select a block from the list of blocks, or click Browse to find a block in another drawing. You can specify the scale, rotation angle, cell alignment or auto fit the block to be inserted.



Learn : [Table](#)

Online URL: <https://www.kb2.gstarcad.com.my/article.php?id=1177>