

4 SHIFT key combination you might not know

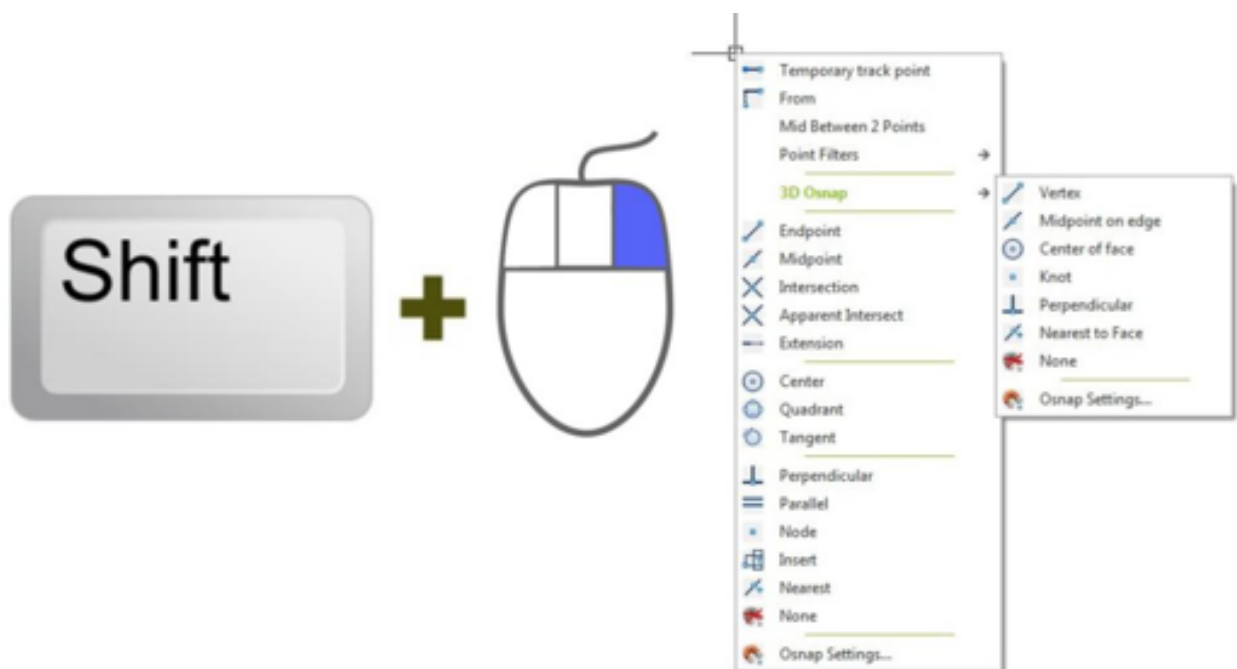
1096 kbadmin November 14, 2019 [Tips & Tricks](#) 0 5426

It is great to know that GstarCAD offers a keys combination that helps modify basic objects quickly. Many people don't realize that using shift combinations can increase their productivity. Here is a little list that might interest you:



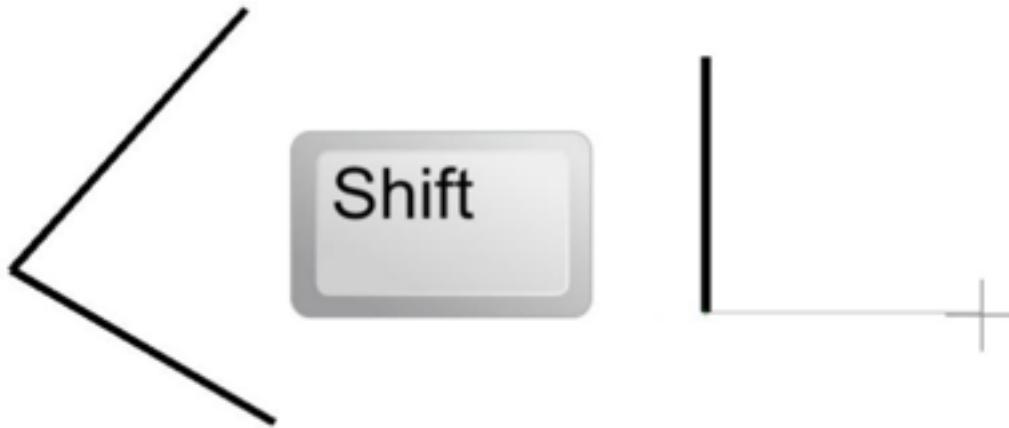
1. Hold [shift] + right-click.

This shortcut key combination will display the context menu for snap overrides really quickly. Try to hold [shift] then right-click. Release, then press [E] to activate endpoint snap.



2. Hold [shift] for temporary ortho mode

Holding this key while you draw, will activate temporary ortho mode. Exactly like when you activate ortho mode by pressing [F8]. But this is just temporary.



3. Holding [shift] while chamfering and filleting

Do you know what will happen if we hold this shortcut key when we use chamfer or fillet? It will override the distance or radius value, and will use 0 (zero) value! Pretty nice.

4. Holding [shift] while using trim/extend

Do you know what will happen if we hold this shortcut key when we use chamfer or fillet? It will override the distance or radius value, and will use 0 (zero) value! Pretty nice. When we use trim, sometimes we want to extend other objects to the same reference. You don't have to finish your trim session and activate extend to do it. Just hold [shift], then trim will be inverted to extend command. This work on the other way when extend command is active, it becomes trim!

Online URL: <https://www.kb2.gstarcad.com.my/article.php?id=1096>